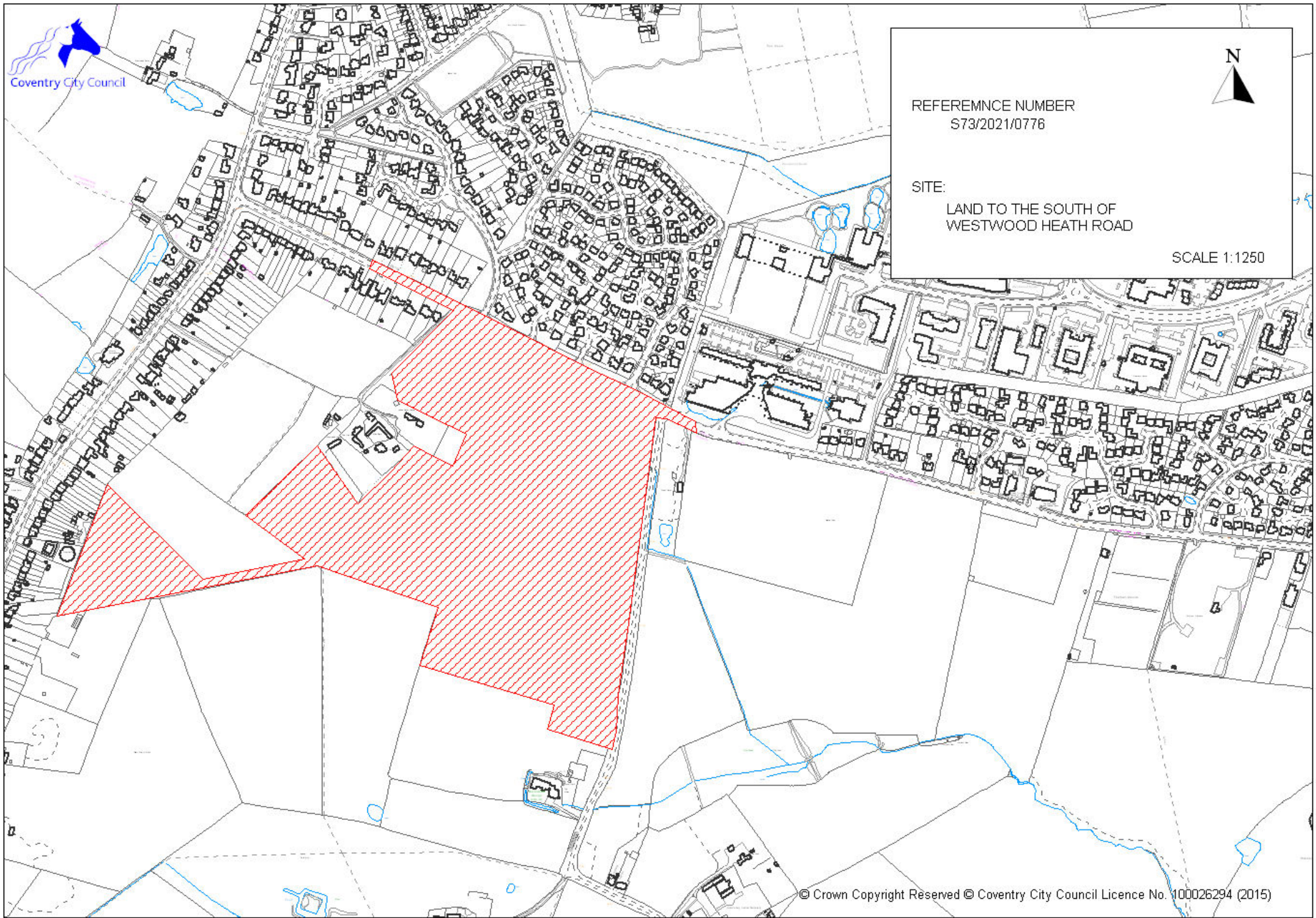


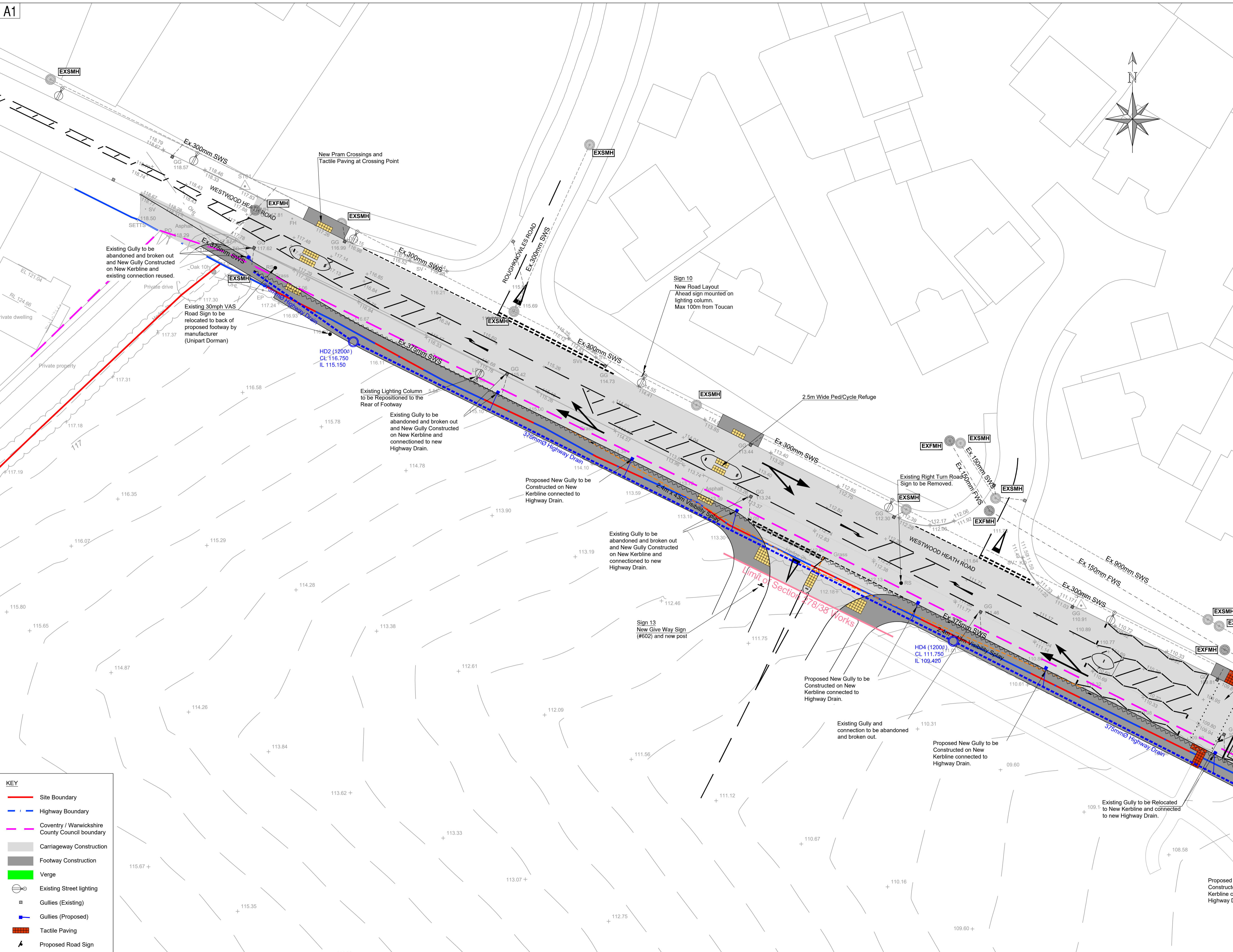


REFEREMNCE NUMBER  
S73/2021/0776

SITE:  
LAND TO THE SOUTH OF  
WESTWOOD HEATH ROAD

SCALE 1:1250





NOTES:

- All works to be carried out strictly in accordance with the Local Authority Highways specification for street works.
- All Statutory Undertakers, including cable television companies, must be contacted prior to commencing any works to ascertain the location and depth of their apparatus. In the event of any protection or diversionary works being necessary to their apparatus then any costs incurred will be the contractors responsibility both for arranging and any payment.
- The Contractor shall provide, erect and maintain such traffic signs, lamps, barriers and traffic control signals, and such measures may be necessitated by the construction of the works in accordance with the recommendations contained in Chapter 8 of the Traffic Signs Manual.
- The developer and contractor shall confirm they are working in accordance with NJUG Volume 1 Guidelines on the Positioning and Colour Coding of Underground Utilities Apparatus and Volume 2 Guidelines on the Positioning of Underground Utilities Apparatus for New Development Sites.
- Root barrier to be installed at the back of the adopted footpath to prevent the roots from any proposed new trees undermining the footpath.
- Retention of the existing kerb race will be subject to inspection and approval by the Local Authority Highways Inspector.
- Re-use of the existing kerb race will be subject to inspection and approval by the Local Authority Highways Inspector. Reconstruction of the existing channel line to have 300mm overbite of each bituminous layer that is disturbed.
- 150mm x 50mm back edging kerbs will be laid upturned and flush at footway crossovers.
- Tactile paving at uncontrolled crossing points to be 400x400mm buff colour blister paving in accordance with 'DETR' guidance on the use of paving surfaces.
- All substrata structures and unconsolidated material within the construction width of the highway, are to be removed.
- CBR values and calculations may be required to determine sub-base thickness.
- Boundary walls will not be adopted.
- Hinged gully grate and frame to BS EN 124, Grade D400, non-rocking with captive left hand end hinge. Minimum waterway area 900cm squared. Frame depth 100mm. Black coated ductile iron.
- All gully and channel grating in shared surfaces and footways to be pedestrian friendly.
- Any existing gullies that are damaged during construction will be replaced with new ones, as agreed with a representative of the Local Authority Highways department.
- Hand laying of bituminous materials is not permitted on adoptable carriageway.
- Tarmac road construction to comply with BS EN 130108.
- The provision of a CCTV survey of any highway drainage, at the developers expense, is required prior to laying the wearing course.
- Where two or more water services boundary boxes are situated together multi-meter boundary as specified by the Sewerage Undertaker are to be installed.
- \*A covenant will be provided to the benefit of the Local Authority ensuring that no planting or structure greater than 600mm in height to be permanently situated within the visibility splay.

LIGHTING

- Lighting design shall be in accordance with BS 5489 Part 1:2003 and BS EN 13201 as appropriate. Electrical equipment for road lighting shall comply in general with the Adopting Local Authority equipment and installation specifications. In the event of conflict the adopting Local Authority specification will take precedence.
- The lighting columns are to be finished in BS 4800 18-B-25 (Dark Grey) (or the equivalent RAL colour with a yellow or white band, 0.1-0.16m wide, 1.5-1.7m from ground level).
- On completion of street lighting installations, as a requirement of BS 7671 and IEE Wiring Regulations 17th Edition, a completion certificate in the form set out in Appendix 6 of the British Standard shall be provided to the LA. Alternatively a Certificate may be adapted from BS 7671 for use in street lighting installation given the ILE Code of Practice for Electrical Safety in Public Lighting Operations.

SIGNING & SAFETY

- The Contractor shall provide, erect and maintain such traffic signs, lamps, barriers and traffic control signals, and such measures may be necessitated by the construction of the works in accordance with the recommendations contained in Chapter 8 of the Traffic Signs Manual.

SERVICES

- All Statutory Undertakers, including cable television companies, must be contacted prior to commencing any works to ascertain the location and depth of their apparatus. In the event of any protection or diversionary works being necessary to their apparatus then any costs incurred will be the contractors responsibility both for arranging and any payment.

Rev	Date	Amendments	By	Chk
J	27.07.20	Right Turn Taper Lining to Rough Knowles Road Amended	NR	SD
H	15.07.20	Drawing Updated following comments from CCC	NR	SD
G	06.02.20	CCC comments incorporated	NR	SD
F	01.10.19	CCC comments incorporated	NR	SD
E	22.07.19	Drawing Updated following RSA Stage 2 Undertaken by CCC	NR	SD
D	15.05.19	Drawing Updated to CCC Tech Audit No. 2	NR	SD
C	20.12.18	CCC comments incorporated	NR	SD
B	04.12.18	Issue for Tender Coventry/Warwickshire CC boundary added	NR	SD
A	22.08.18	First Issue	NR	SD
-	27.06.18		NR	SD

**RLRE**  
Client

**Crest NICHOLSON**  
Project

Westwood Heath Road Coventry

S278 General Arrangement Sheet 1 of 2

Status

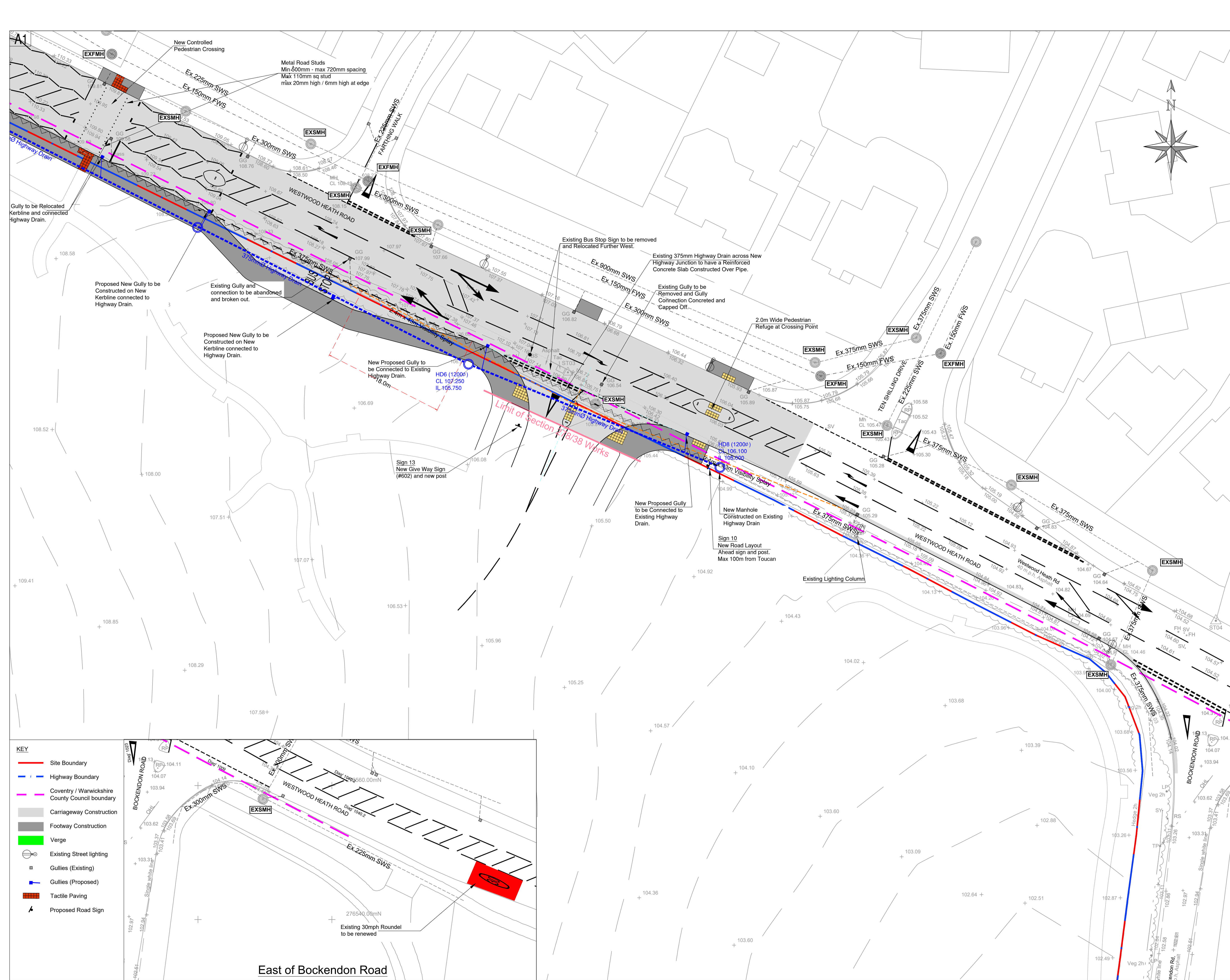
Scale	Drawn	Checked	Date
A1@ 1:250	NR	SD	13.06.18

Project No. Drawing No. Rev.

P18-180 401 J

Scale Bar:  
1:250 0 4 8 12 16 20 24

Copyright © Rodgers Leask Limited



- NOTES:**
- All works to be carried out strictly in accordance with the Local Authority Highways specification for street works.
  - All Statutory Undertakers, including cable television companies, must be contacted prior to commencing any works to ascertain the location and depth of their apparatus. In the event of any protection or diversionary works being necessary to their apparatus then any costs incurred will be the contractors responsibility both for arranging and any payment.
  - The Contractor shall provide, erect and maintain such traffic signs, lamps, barriers and traffic control signals, and such measures may be necessitated by the construction of the works in accordance with the recommendations contained in Chapter 8 of the Traffic Signs Manual.
  - The developer and contractor shall confirm they are working in accordance with NJUG Volume 1 Guidelines on the Positioning and Colour Coding of Underground Utilities Apparatus and Volume 2 Guidelines on the Positioning of Underground Utilities Apparatus for New Development Sites.
  - Root barrier to be installed at the back of the adopted footpath to prevent the roots from any proposed new trees undermining the footpath.
  - Retention of the existing kerbline will be subject to inspection and approval by the Local Authority Highways Inspector.
  - Re-use of the existing kerb race will be subject to inspection and approval by the Local Authority Highways Inspector. Reconstruction of the existing channel line to have 300mm overlie of each bituminous layer that is disturbed.
  - 150mm x 50mm back edging kerbs will be laid upturned and flush at footway crossovers.
  - Facile paving at uncontrolled crossing points to be 400x400mm bull colour blister paving in accordance with 'DETR' guidance on the use of paving surfaces.
  - All substrata structures and unconsolidated material within the construction width of the highway, are to be removed.
  - CBR values and calculations may be required to determine sub-base thickness.
  - Boundary walls will not be adopted.
  - Hinged gully grate and frame to BS EN 124, Grade D400, non-rocking with captive left hand end hinge. Minimum waterway area 900cm squared. Frame depth 100mm. Black coated ductile iron.
  - All gully and channel grating in shared surfaces and footways to be pedestrian friendly.
  - Any existing gullies that are damaged during construction will be replaced with new ones, as agreed with a representative of the Local Authority Highways department.
  - Hand laying of bituminous materials is not permitted on adoptable carriageway.
  - Tarmac road construction to comply with BS EN 131018.
  - The provision of a CCTV survey of any highway drainage, at the developers expense, is required prior to laying the wearing course.
  - Where two or more water services boundary boxes are situated together multi-meter boundary as specified by the Sewerage Undertaker are to be installed.
  - \* A covenant will be provided to the benefit of the Local Authority ensuring that no planting or structure greater than 600mm in height to be permanently situated within the visibility splay.

- LIGHTING**
- Lighting design shall be in accordance with BS 5489 Part 1:2003 and BS EN 13021 as appropriate. Electrical equipment for road lighting shall comply in general with the Adopting Local Authority equipment and installation specifications. In the event of conflict the adopting Local Authority specification will take precedence.
  - The lighting columns are to be finished in BS 4800 18-B-25 (Dark Grey) (or the equivalent RAL colour with a yellow or white band, 0.14-0.16m wide, 1.5-1.7m from ground level).
  - On completion of street lighting installations, as a requirement of BS 7671 and IEE Wiring Regulations 17th Edition, a completion certificate in the form set out in Appendix 6 of the British Standard shall be provided to the LA. Alternatively a Certificate may be adapted from BS 7671 for use in street lighting installation given the ILE Code of Practice for Electrical Safety in Public Lighting Operations.

- SIGNING & SAFETY**
- The Contractor shall provide, erect and maintain such traffic signs, lamps, barriers and traffic control signals, and such measures may be necessitated by the construction of the works in accordance with the recommendations contained in Chapter 8 of the Traffic Signs Manual.

- SERVICES**
- All Statutory Undertakers, including cable television companies, must be contacted prior to commencing any works to ascertain the location and depth of their apparatus. In the event of any protection or diversionary works being necessary to their apparatus then any costs incurred will be the contractors responsibility both for arranging and any payment.

Rev	Date	Amendments	By	Chk
H	15.07.20	Drawing updated to CCC Comments	NR	SD
G	06.02.20	CCC comments incorporated	NR	SD
F	01.10.19	CCC comments incorporated	NR	SD
E	22.07.19	Drawing updated following RSA Stage 2 undertaken by CCC	NR	SD
D	15.05.19	Drawing updated to CCC Tech Audit No.2	NR	SD
C	20.12.18	CCC comments incorporated	NR	SD
B	04.12.18	Issue for Tender Coventry/Warwickshire CC boundary added	NR	SD
A	22.08.18		NR	SD
-	27.06.18	First Issue	NR	SD

**RLRE**  
Client

**Crest**  
NICKERSON  
Project

**Westwood Heath Road Coventry**

Drawing Title  
**S278 General Arrangement Sheet 2 of 2**

Status

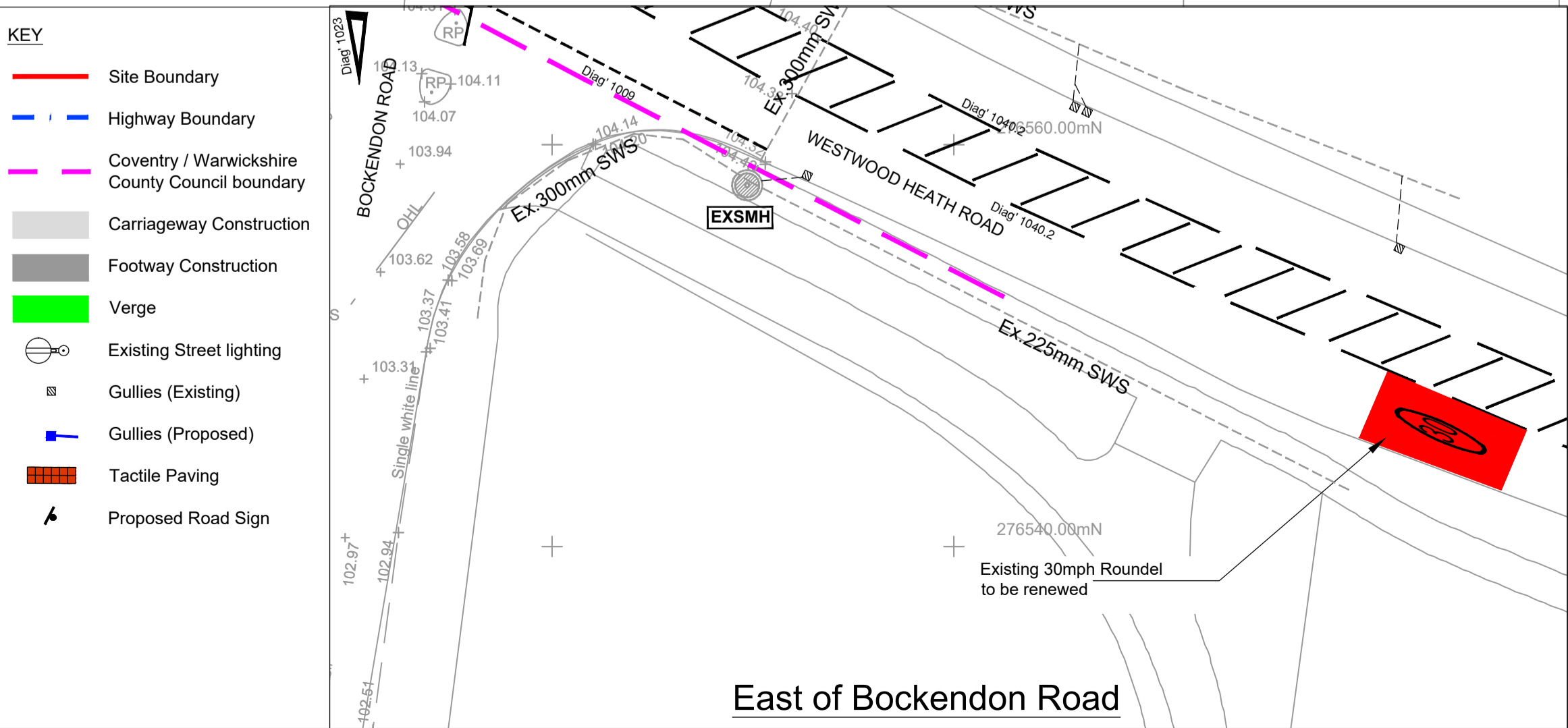
**Tender**

Scale	Drawn	Checked	Date
A1@ 1:250	NR	SD	13.06.18

Project No.	Drawing No.	Rev.
P18-180	402	H

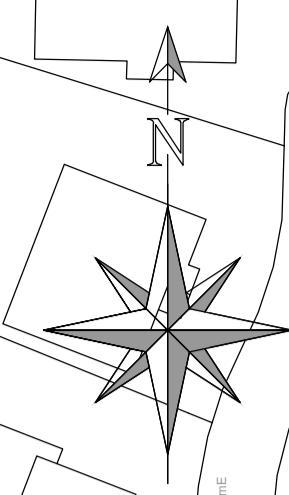
Scale Bar:  
1:250  
0 2 4 6 8 10 12 14 16 18  
Metres

Copyright © Rodgers Leask Limited



**Key:**

- Site Boundary
- - - Indicative Highway Boundary
- S278 carriageway to be adopted
- S278 footway to be adopted
- S38 carriageway to be adopted (combined agreement)
- S38 footway to be adopted (combined agreement)
- Highway Drainage Gullies & Connections



- NOTES:**
1. All works to be carried out strictly in accordance with the Local Authority Highways specification for street works.
  2. All Statutory Undertakers, including cable television companies, must be contacted prior to commencing any works to ascertain the location and depth of their apparatus. In the event of any protection or diversionary works being necessary to their apparatus then any costs incurred will be the contractors responsibility both for arranging and any payment.
  3. The Contractor shall provide, erect and maintain such traffic signs, lamps, barriers and traffic control signals, and such measures may be necessitated by the construction of the works in accordance with the recommendations contained in Chapter 6 of the Traffic Signs Manual.
  4. The developer and contractor shall confirm they are working in accordance with NUJG Volume 1 Guidelines on the Positioning and Colour Coding of Underground Utilities Apparatus and Volume 2 Guidelines on the Positioning of Underground Utilities Apparatus for New Development Sites.
  5. Root barrier to be installed at the back of the adopted footpath to prevent the roots from any proposed new trees undermining the footpath.
  6. Retention of the existing kerbline will be subject to inspection and approval by the Local Authority Highways inspector.
  7. Re-use of the existing kerb race will be subject to inspection and approval by the Local Authority Highways inspector. Reconstruction of the existing channel line to have 300mm overbite of each bituminous layer that is disturbed.
  8. 150mm x 50mm back edging kerbs will be laid upturned and flush at footway crossovers.
  9. Tactile paving at uncontrolled crossing points to be 400x400mm buff colour blister paving in accordance with DETR guidance on the use of paving surfaces.
  10. All subgrade structures and unconsolidated material within the construction width of the highway, are to be removed.
  11. CBR values and calculations may be required to determine sub-base thickness.
  12. Boundary walls will not be adopted.
  13. Hinged gully grate and frame to BS EN 124, Grade D400, non-rocking with captive left hand end flange. Minimum waterway area 900cm squared. Frame depth 100mm. Black coated ductile iron.
  14. All gully and channel grating in shared surfaces and footways to be pedestrian friendly.
  15. Any existing gullies that are damaged during construction will be replaced with new ones, as agreed with a representative of the Local Authority Highways department.
  16. Hand laying of bituminous materials is not permitted on adoptable carriageway.
  17. Tarmac road construction to comply with BS EN 130108.
  18. The provision of a CCTV survey of any highway drainage, at the developers expense, is required prior to laying the wearing course.
  19. Where two or more water services boundary boxes are situated together multi-meter boundary as specified by the Sewerage Undertaker are to be installed.
  20. \* Covenant will be provided to the benefit of the Local Authority ensuring that no planting or structure greater than 600mm in height to be permanently situated within the visibility splay.

- LIGHTING**
- A. Lighting design shall be in accordance with BS 5489 Part 1:2003 and BS EN 13201 as appropriate. Electrical equipment for road lighting shall comply in general with the Adopting Local Authority equipment and installation specifications. In the event of conflict the adopting Local Authority specification will take precedence.
- B. The lighting columns are to be finished in BS 4800 18-B-25 (Dark Grey) (or the equivalent RAL colour with) a yellow or white band, 0.14-0.16m wide, 1.5-1.7m from ground level.
- C. On completion of street lighting installations, as a requirement of BS 7671 and IEE Wiring Regulations 17th Edition, a completion certificate in the form set out in Appendix 6 of the British Standard shall be provided to the LA. Alternatively a Certificate may be adopted from BS 7671 for use in street lighting installation given the ILE Code of Practice for Electrical Safety in Public Lighting Operations.

- SIGNING & SAFETY**
- D. The Contractor shall provide, erect and maintain such traffic signs, lamps, barriers and traffic control signals, and such measures may be necessitated by the construction of the works in accordance with the recommendations contained in Chapter 8 of the Traffic Signs Manual.

- SERVICES**
- E. All Statutory Undertakers, including cable television companies, must be contacted prior to commencing any works to ascertain the location and depth of their apparatus. In the event of any protection or diversionary works being necessary to their apparatus then any costs incurred will be the contractors responsibility both for arranging and any payment.

Rev	Date	Amendments	By	CHK
F	06.02.20	CCC comments incorporated	NR	SD
E	01.10.19	CCC comments incorporated	NR	SD
D	22.07.19	Drawing updated to new layout	NR	SD
C	13.05.19	Drawing amended to CCC Comments from Tech Audit No. 2	NR	SD
B	20.12.18	CCC comments incorporated	NR	SD
A	04.12.18	Issue for Tender	NR	SD
	29.06.18	First Issue	NR	SD

**RLRE**

Client

**Crest NICHOLSON**

Project  
**Westwood Heath Road  
Coventry**

Drawing Title  
**S278 Agreement  
Legal Plan**

Status  
**Tender**

Scale	Drawn	Checked	Date
A1@500	NR	SD	23.05.18

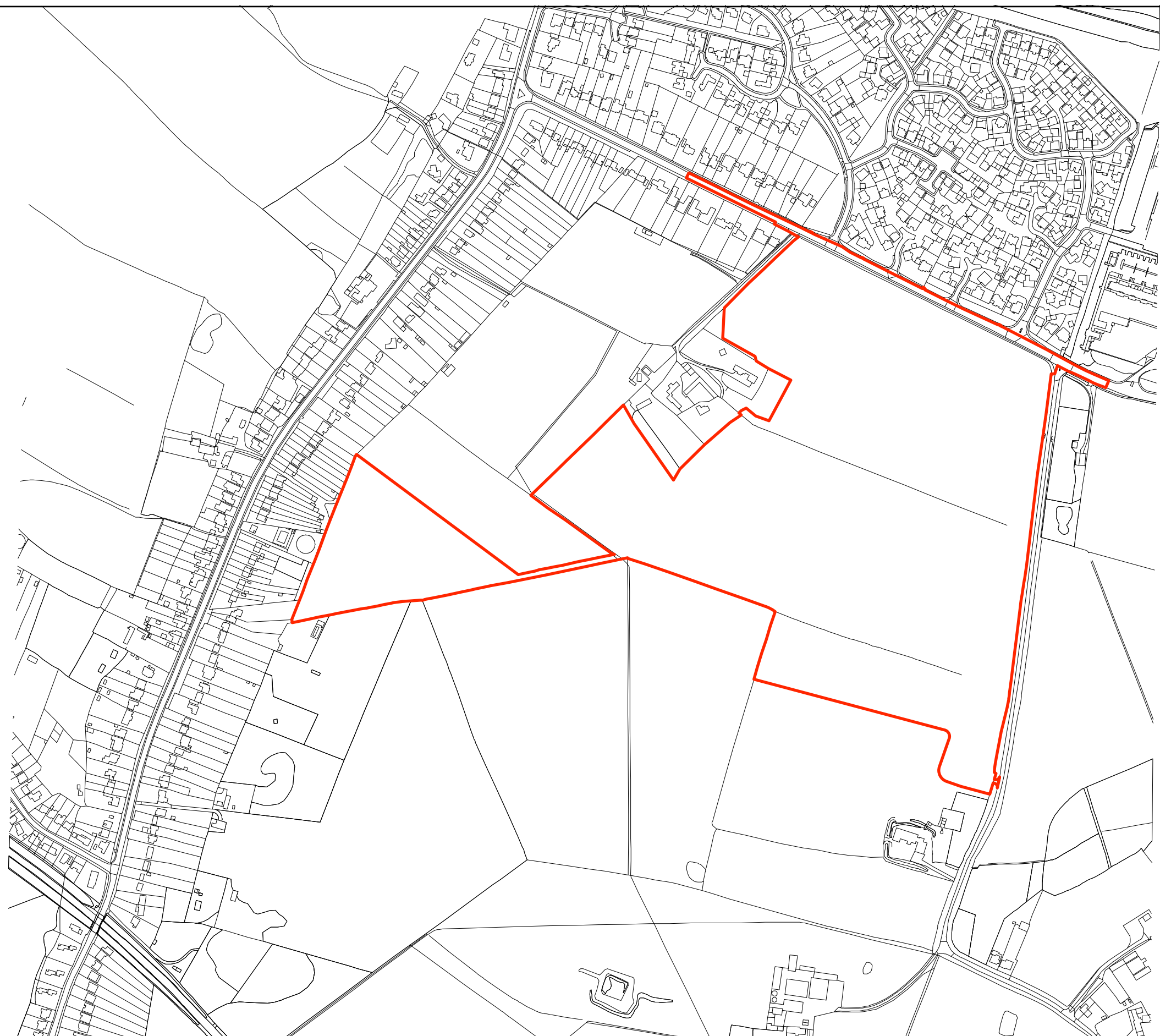
Project No.	Drawing No.	Rev.
P18-180	400	F

Scale Bar:  
1:500  
0 10 20 30

Copyright © Rodgers Leask Limited



□ Planning application boundary 24.199ha



Westwood Heath Road  
Crest Nicholson



Based upon the 2016 Ordnance Survey Mastermap vector data with the permission of the Ordnance Survey on behalf of Her Majesty's Stationery Office, © Crown copyright. Terence O'Rourke Ltd. Licence No. 100019980.

Red line plan  
Parameter Plan  
156025B / PP06G  
1:5000@A3  
December 2017

TERENCE  
O'ROURKE   
© Terence O'Rourke Ltd 2017